

Optional equipment and accessories

Safety devices have been removed on some of the photos



Punching on wing and core section L 1 1/2" to 3".



4" Oversize punching unit mounted on machine



Round pipe end punching



Square pipe end punching



Double punching on gooseneck-type die holder



6" Oversize Punching unit mounted on machine.



Double punching oversized unit



Triple punching 3 holes per stroke with neoprene stripper



Punching tube with mandrel die holder



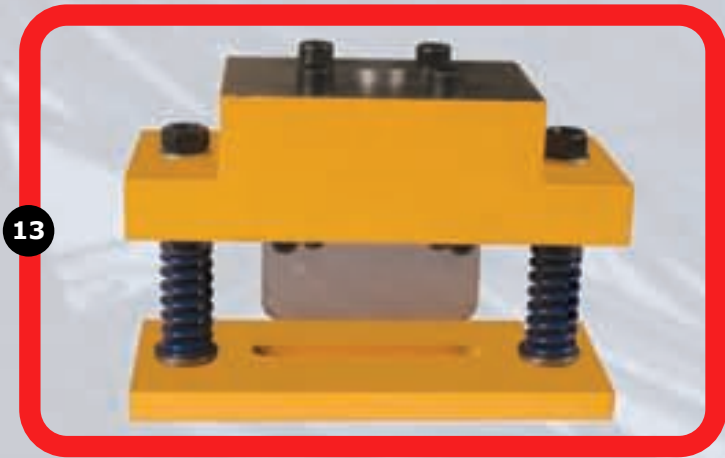
Plate/sheet bending
(not for sale in the EU)



Double punching for I



Notching 8" x 16" mm.



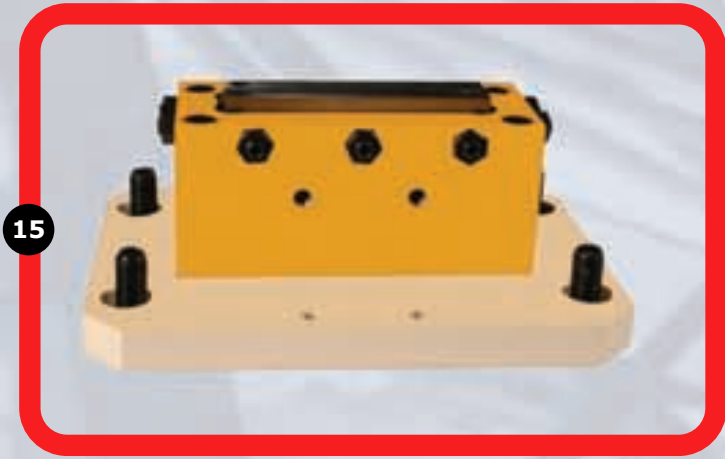
13

Punch notching of louvres



14

Louvre notching tool mounted on machine



15

Die notching of louvres



16

Notching tool mounted at punch end of microcrop



17

Triangular notching tool with table



18

Triangular notching unit



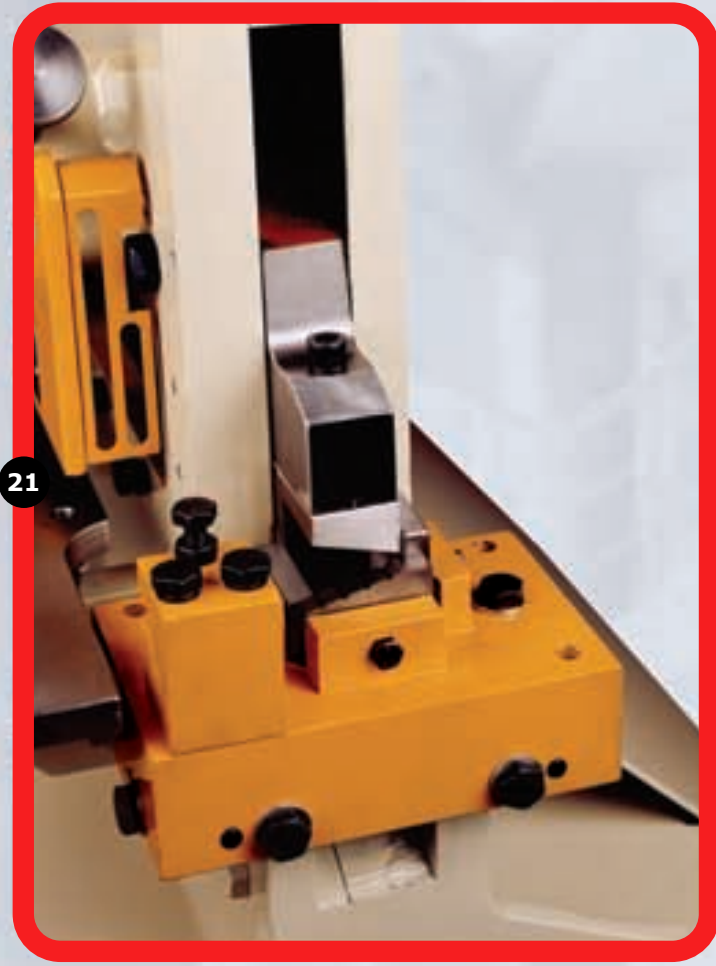
19

Hydraulic clamps for angle and plate



20

Tee slotted table for mounting die sets



21

Notcher for footings



22

Pipe notching



23

Multi-stop table



24

Flip Stop



25

Neoprene punch stripper



26

L -shearing equipment



27

Itemised picture of oversized punching unit



28

Triple punching with hydraulic stripper



29

Special punches and dies



30

Offset punches and dies



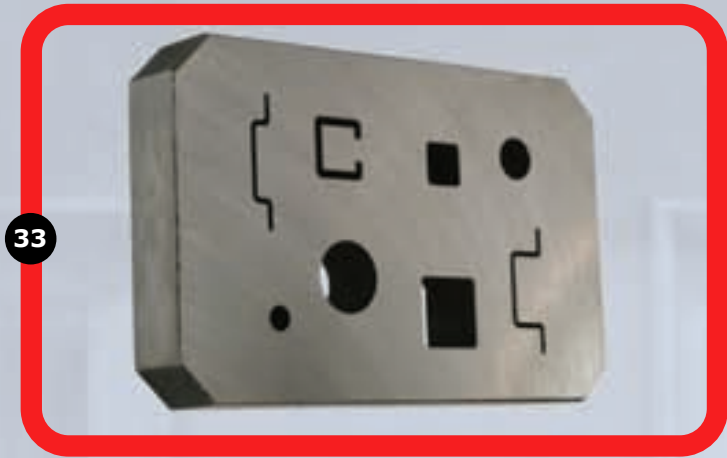
31

Blade with two U hearing apertures



32

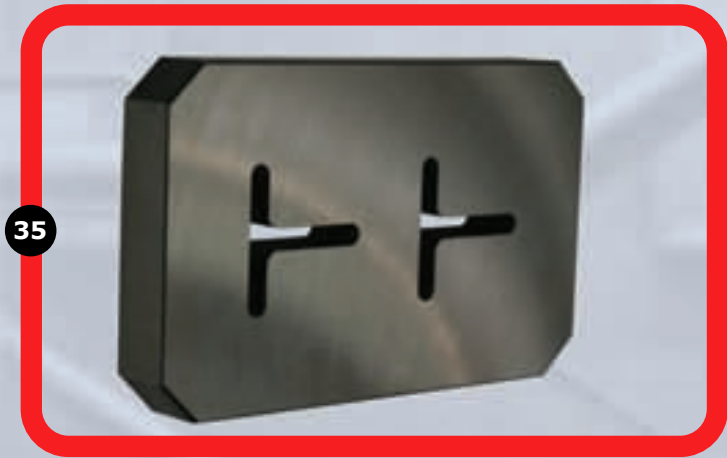
Blade U + 3 rounds



Blade □, ∟, ∅ and ⬡



Multi-hole blade for solid bars.



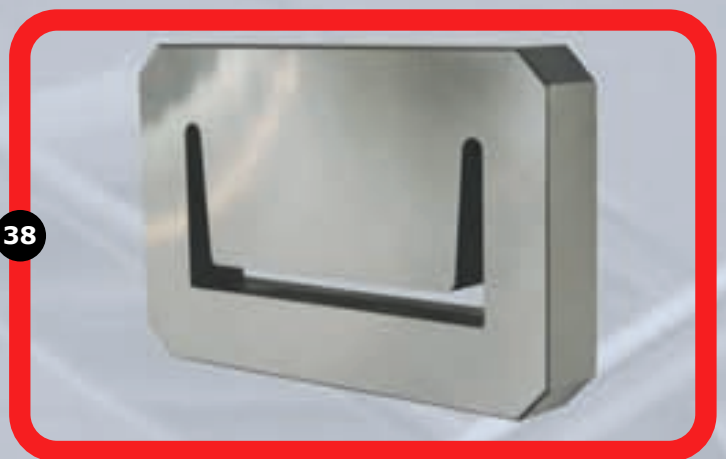
Blade two T apertures



Blade I



Cold rolled L-cutting blade



Hot rolled L-cutting blade