

GEKA's PAXY product line offers CNC solutions for automated punching of steel plates. The PAXY line automates tedious and time-consuming preliminary tasks, such as center marking and manual positioning. These solutions maximize productivity, reduce costs and increase accuracy.

PAXY				
	PAXY 1000	PAXY 1500	PAXY 2000	PAXY X PLUS
Max. Length	40"	60"	80"	118" - 708"
Max. Width	20"	30"	30"	30"
Max. Thickness	1-9/16"	1-9/16"	1-9/16"	1-9/16"
Max. Diameter	1-9/16"	1-9/16"	1-9/16"	1-9/16"
N° Punches	Up to 3	Up to 3	Up to 3	Up to 3

Capacities based on material resistance of 65,000 PSI tensile

Paxy 1000/1500/2000

PAXY 1000/1500/2000 is a fully-automated system for punching thick steel plates (1/8" - 1-9/16"), up to a size of 78.74"x30". By automating the feeding and positioning process, steel plate punching becomes fast and easy.

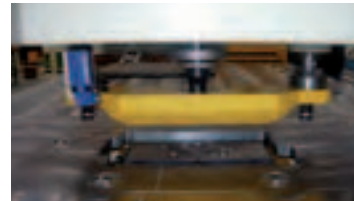
Peripherals Available

- TRIPLE-PUNCHING HEAD
- MARKING UNIT
- VERTICAL DRILLING UNIT
- GEKA PRO PC CONTROL



AUTOMATED FEEDER

- Material clamping guides
- Set of independent servo drives along each axis
- Fast and easy loading and unloading of material



PUNCHING UNIT

- Proven quality and performance of the PUMA Model
- Variable punching force (88 -240 Ton)
- Hydraulic hold down



USER-INTERFACE

- Touch Screen
- Easy and intuitive programming
- Compact Flash memory card



GEKA 
The steel working company



Paxy X Plus

The PAXYX PLUS product line is designed for automated punching of long steel plates up to a length of 708 inches and thicknesses up to 1-9/16". The plate is firmly held in place by clamping guides which control movement along the X-Axis. The punching unit mounted on a carriage controls movement along the Y-Axis.

Peripherals Available

- TRIPLE-PUNCHING HEAD
- MARKING UNIT
- VERTICAL DRILLING UNIT
- GEKA PRO PC CONTROL



AUTOMATED FEEDER

- Material clamping guides
- Set of independent servo drives along each axis
- Fast and easy loading and unloading of material



PUNCHING UNIT

- Proven quality and performance of the PUMA Model
- Variable punching force (88 - 240 Tons)
- Hydraulic hold down
- Servo motor and spindle-controlled horizontal positioning



USER-INTERFACE

- Touch screen
- User-friendly software programs
- Compact Flash memory card

Paxy Line Optional Equipment



TRIPLE-PUNCHING HEAD

- Variable three different punches
- Independently selectable from user-interface
- Maximum diameter to 1-9/16"



MARKING UNIT

- Marking force 80 tons
- Accommodates up to 10 digits (10x 6 mm-size typeface) [.4" x .25"]



GEKA PRO PC CONTROL

- Touch screen, industrial PC operating on Windows XP platform
- Network connectivity and USB ports
- Compatible with leading design applications
- Remote assistance via internet



VERTICAL DRILLING UNIT

- 1-9/16" maximum diameter
- Cutting speed 65ft/min.
- Morse Taper 4 Tool Holder

Peripherals Available by Model